

- Electrical modulating types
- Provides long service life under extreme conditions with its robust and durable body construction
- Provides high efficiency, energy-saving and is environmental-friendly
- Has low emission values
- Compatible with electronic and mechanical modulating systems
- Suitable for operation according to the steam atomizing system at high or low pressure
- Quiet operation thanks to its special technology
- Suitable for operation with hot air
- Turn down ratio-Gas: 1:6 Oil: 1:4

EMISSIONS

Burner	NO _x [ppm]	CO [ppm]
Gas standard	<=60	<10
Oil standard	75 ÷ 110	< 35

Type	Max Capacity* (KW)	Oil Consumption (Kg/h)
DG/DL/DH/DGL/DGH320-E	~3200	~270
DG/DL/DH/DGL/DGH400-E	~4000	~337
DG/DL/DH/DGL/DGH480-E	~4800	~404
DG/DL/DH/DGL/DGH590-E	~5900	~498
DG/DL/DH/DGL/DGH700-E	~7000	~590
DG/DL/DH/DGL/DGH780-E	~7800	~658
DG/DL/DH/DGL/DGH850-E	~8500	~717
DG/DL/DH/DGL/DGH930-E	~9300	~785
DG/DL/DH/DGL/DGH1100-E	~11000	~930
DG/DL/DH/DGL/DGH1200-E	~12400	~1045
DG/DL/DH/DGL/DGH1400-E	~13900	~1170
DG/DL/DH/DGL/DGH1500-E	~15500	~1305
DG/DL/DH/DGL/DGH1600-E	~17100	~1440
DG/DL/DH/DGL/DGH1800-E	~18600	~1570
DG/DL/DH/DGL/DGH2000-E	~20000	~1690
DG/DL/DH/DGL/DGH2250-E	~22500	~1900
DG/DL/DH/DGL/DGH2400-E	~24000	~2025
DG/DL/DH/DGL/DGH3200-E	~32000	~2700

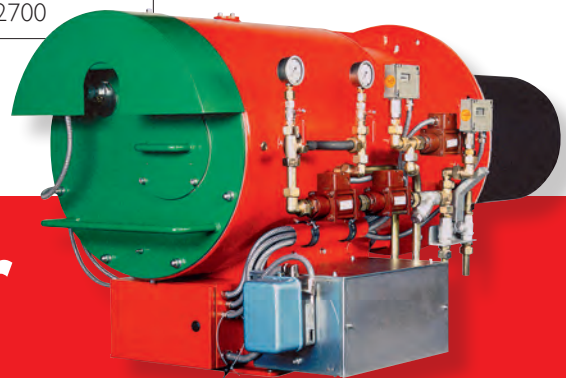
*capacity shows gas as fuel

Fuel: Heating oil, HV = 42.7MJ/kg
Natural gas, HV = 36.0 MJ/Nm

Oil consumption shows light oil as fuel, it has little change when oil changes to heavy oil.

Gas pressures:
In front of the gas valve 150mbar;
in the burner head approx. 80 - 100mbar
at max. power.

Central gas burner:
Tapped off before the gas valve.



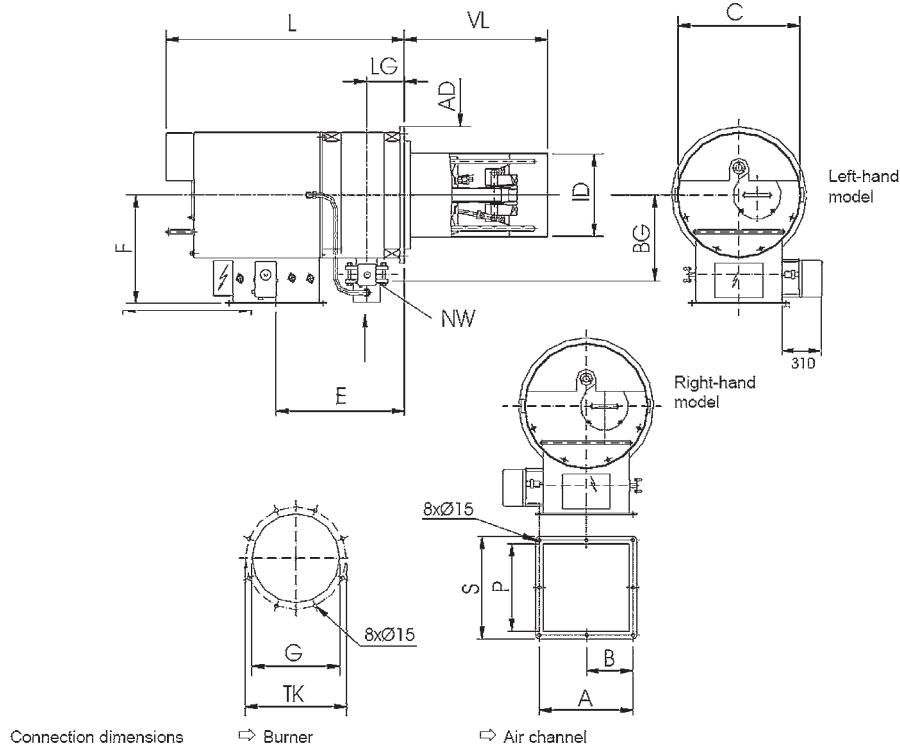
Duoblock Burner

Gas Burner DG-E

Oil Burner DL-E/DH-E

Dual Fuel Burner DGL-E/DGH-E

Dimensions



Type	L	C	AD	ID	F	E	VL	TK	G	BG	LG	NW	A	B	S	P	Weight
	mm	mm	mm	mm	mm	mm	mm	mm	mm	mm	mm	mm	mm	mm	mm	mm	kg
DG / DL / DH / DGL / DGH																	
320E	1270	550	503	-	550	630	570	430	380	450	197	100	400	200	436	356	450
400E	1270	550	503	270	550	630	570	430	380	450	197	100	400	200	436	356	450
480E	1270	550	555	-	550	630	670	430	430	450	197	100	400	200	436	356	450
590E	1270	550	555	315	550	630	670	480	430	450	197	100	400	200	436	356	450
700E	1270	550	555	335	550	630	670	480	430	450	197	100	400	200	436	356	450
780E	1270	550	605	350	550	605	670	530	480	450	197	100	450	225	506	406	450
850E	1270	550	605	365	550	605	670	530	480	450	197	100	450	225	506	406	450
930E	1270	550	605	380	550	605	670	530	480	450	197	100	450	225	506	406	510
1100E	1270	650	705	400	600	680	750	630	580	516	197	150	500	250	556	456	510
1200E	1270	650	705	425	600	680	750	630	580	516	197	150	500	250	556	456	510
1400E	1270	650	705	445	600	680	750	630	580	516	197	150	500	250	556	456	510
1500E	1625	822	805	475	690	770	870	710	660	566	227	150	550	275	608	508	620
1600E	1625	822	805	495	690	770	870	710	660	566	227	150	550	275	608	508	620
1800E	1625	822	805	515	690	770	870	710	660	566	227	150	550	275	608	508	620
2000E	1625	822	865	545	690	820	870	792	740	566	227	150	660	330	708	608	620
2250E	1625	822	865	560	690	820	870	792	740	566	227	150	660	330	708	608	620
2400E	1625	822	865	580	690	820	870	792	740	566	227	150	660	330	708	608	620

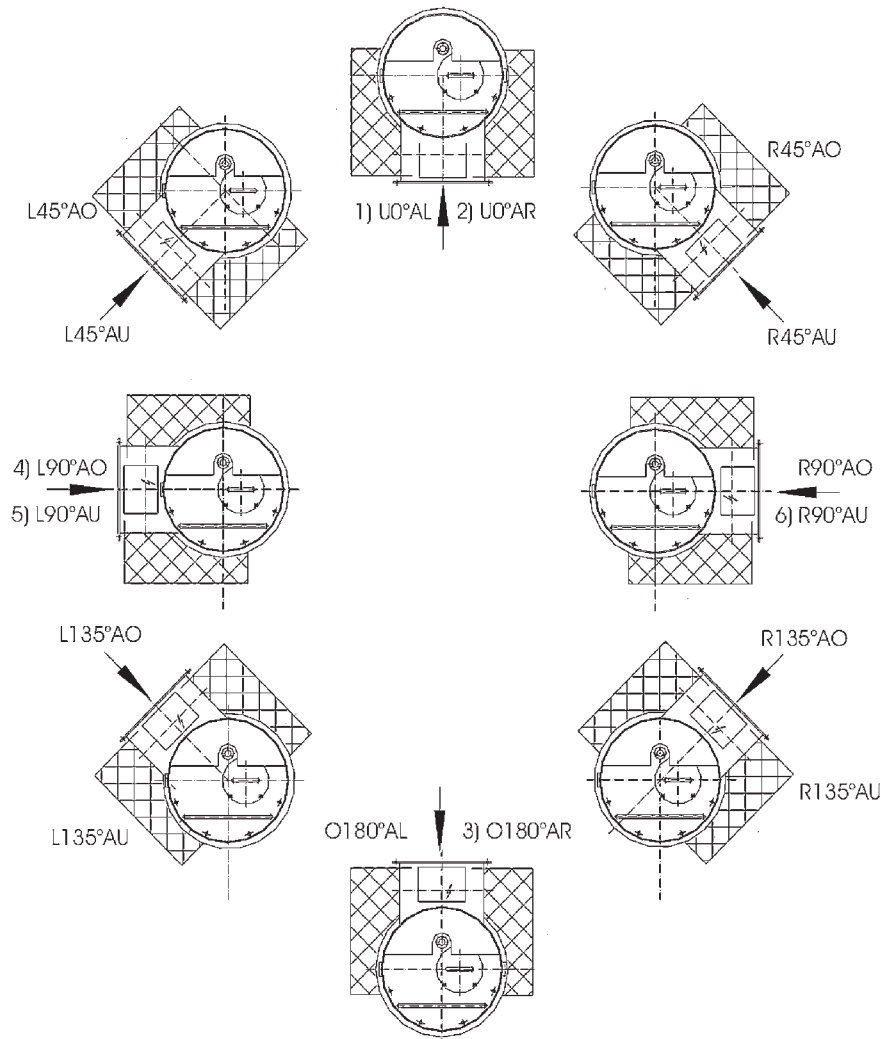
Duoblock Burner

Gas DG-E

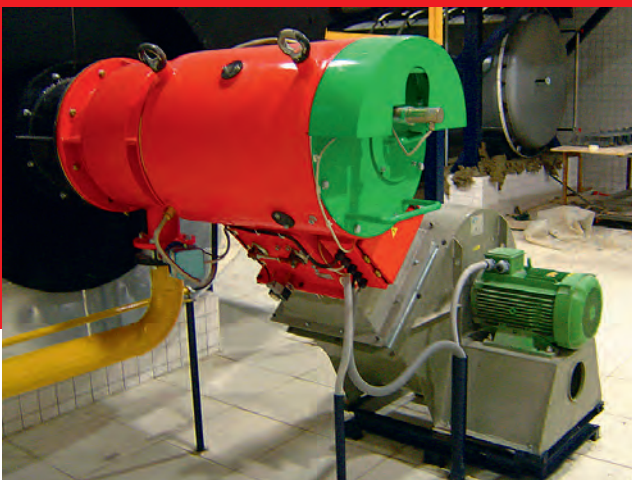
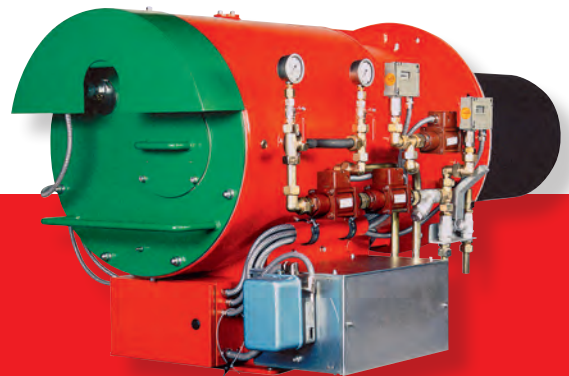
Oil DL-E/DH-E

Dual Fuel DGL-E/DGH-E

Lay-out of combustion air supply

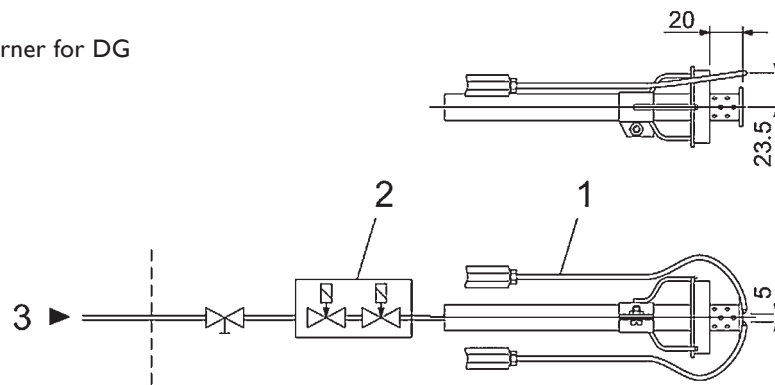


- Air in direction of arrow
- Gas connection on drive side
- In the case of electronic combined regulation, the gas connection can be freely selected.



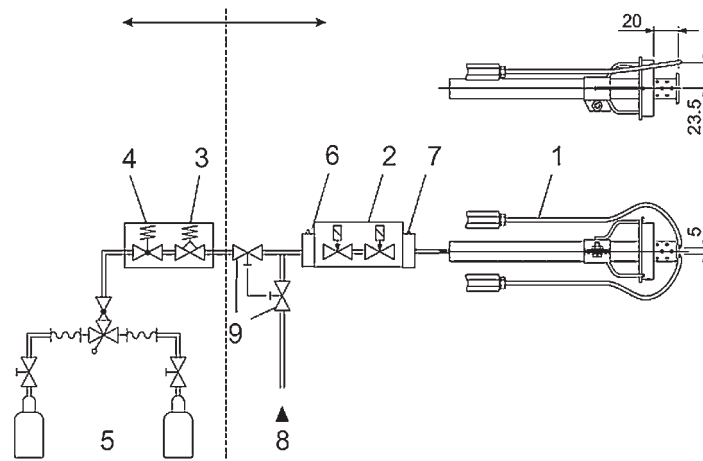
Pilot burners

Pilot burner for DG



1. Pilot gas burner
2. Dual solenoid valve including gas filter and quantity regulation
3. Natural gas

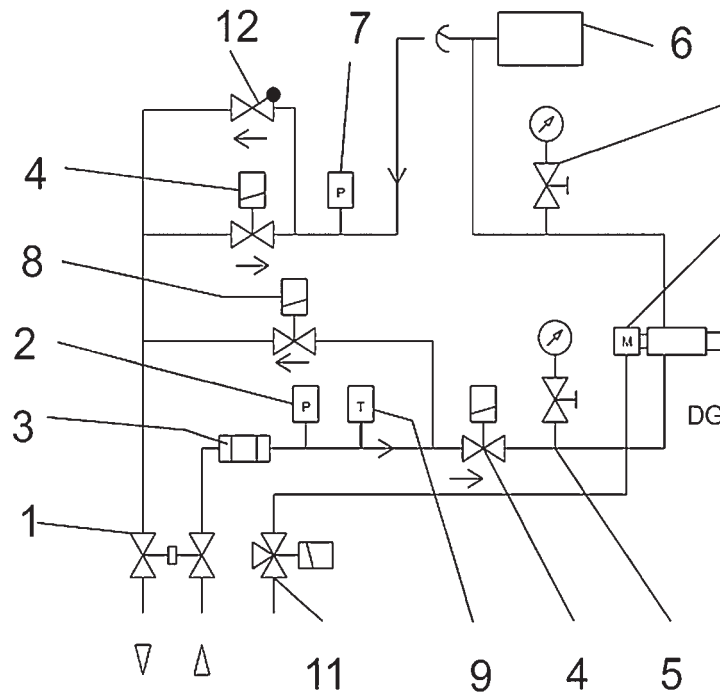
Pilot burner for DL/DH and DGL/DGH



1. Pilot gas burner
2. Dual solenoid valve including gas filter and quantity regulation
3. Twin ball valve
4. Gas pressure controller
5. Safety shut-off valves (SAV)
6. Propane gas dual-bottle installation
7. Natural gas



Hydraulics/Hydraulic circuit for oil (DL/DH/DGL/DGH)



- | | |
|--------------------------------------|------------------------------------|
| 1. Dual ball valve | 7. Pressure switch, max. |
| 2. Pressure switch, min. | 8. Solenoid valve |
| 3. Filter | 9. Thermostat |
| 4. Solenoid valve | 10. Pneumatic 0-connection |
| 5. Pressure gauge with shut-off cock | 11. 3/2-way valve (compressed air) |
| 6. MVR with oil return controller | 12. Non-return valve |



Duoblock Burner

Gas DG-E

Oil DL-E/DH-E

Dual Fuel DGL-E/DGH-E